

Friends of Derby Neck Library Presents:

KiKu

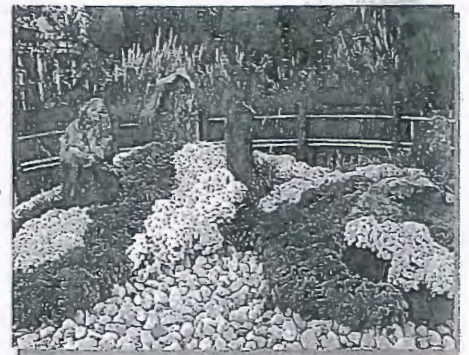
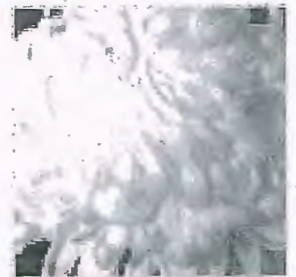
The Art of the Japanese Chrysanthemum



THE NEW YORK BOTANICAL GARDEN

October 19, 2014 Sunday

- One of the foremost public gardens in America and a National Historic Landmark, the NEW YORK BOTANICAL GARDEN encompasses 250 acres of beautiful natural terrain with dramatic rock outcroppings, a river and cascading waterfall, undulating hills, wetlands, ponds, and 50 acres of historic, uncut forest.
- Discover the exquisite beauty of *kiku* - meticulously cultivated chrysanthemums, a traditional Japanese art. Marvel at the dramatic shapes, vibrant colors, and perfect blossoms that characterize the specialized styles of displaying kiku. These techniques have been developed over 1,500 years.
- Includes self-guided All-Garden Admission Pass for the Enid A. Haupt Conservatory, the special KiKu exhibit, and the Tram Tour. Time at the garden café and the gift shop.
- Time on Arthur Avenue—the “Little Italy” of the Bronx.



COST: \$72.pp ADULT /

\$70.pp SENIOR (65+ yrs)

Departure: 9:00am, Derby High School, parking lot

Approx. Return: 5:30pm, Derby

For Information & Reservations contact:

Derby Neck Library 203-734-1492 or

Ellen Amodeo 203-734-3561



**FRIENDSHIP TOURS
THE SHIP SHOP**

705 Bloomfield Ave, Bloomfield, CT 06002
860-243-1630 • 800-243-1630
www.friendshiptours.net

Friendship Tours arranges the components of the tour and does not own or operate the independent suppliers of services including motorcoaches. Trips cancelled because of weather conditions are handled on a per trip basis. Refunds will depend on timing of the cancellation and supplier policies. Tickets to theaters/events are non-refundable. Friendship Tours reserves the right to adjust cost based on fuel surcharges.